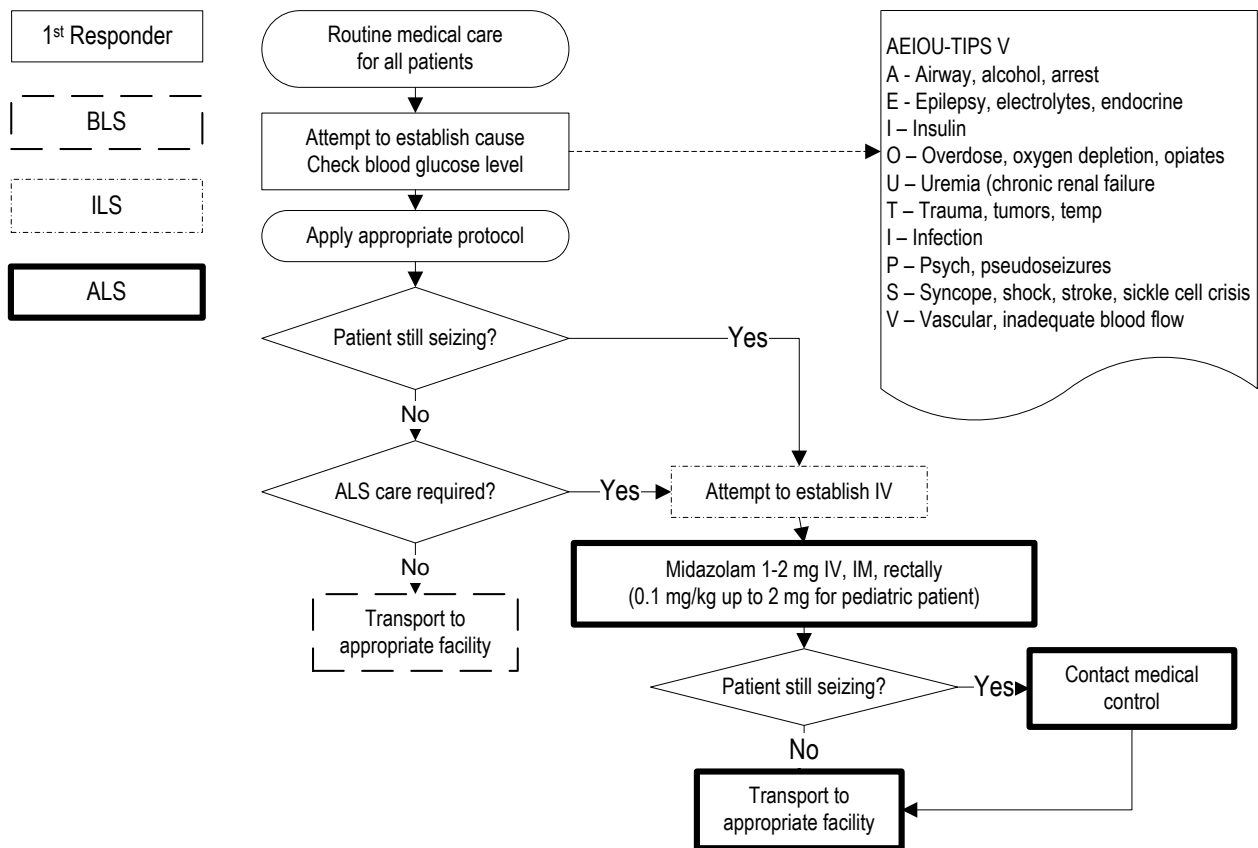


Initiated: 9/92
Reviewed/revise: 7/1/11
Revision: 6

**MILWAUKEE COUNTY EMS
MEDICAL PROTOCOL
SEIZURE**

Approved by: Ronald Pirrallo, MD, MHSA
WI EMS Approval Date: 6/22/11
Page 1 of 1

History:	Signs/Symptoms:	Working Assessment:
Reported/witnessed seizure activity History of seizures Medic alert tag Anti-seizure medications History of recent trauma History of diabetes Pregnancy Fever	Seizure activity Decreased mental status (post ictal) Sleepiness Incontinence Trauma	Seizure (look for underlying cause): <ul style="list-style-type: none"> • Head trauma • Noncompliance • Fever/infection • Hypoglycemia • Overdose/poisoning • Alcohol withdrawal • Hypoxia • Eclampsia



NOTE:

- Pediatric patients with febrile seizures rarely seize more than once. If patient seizes again, evaluate for another cause.
- Status Epilepticus is defined as two or more successive seizures without a period of consciousness or recovery.