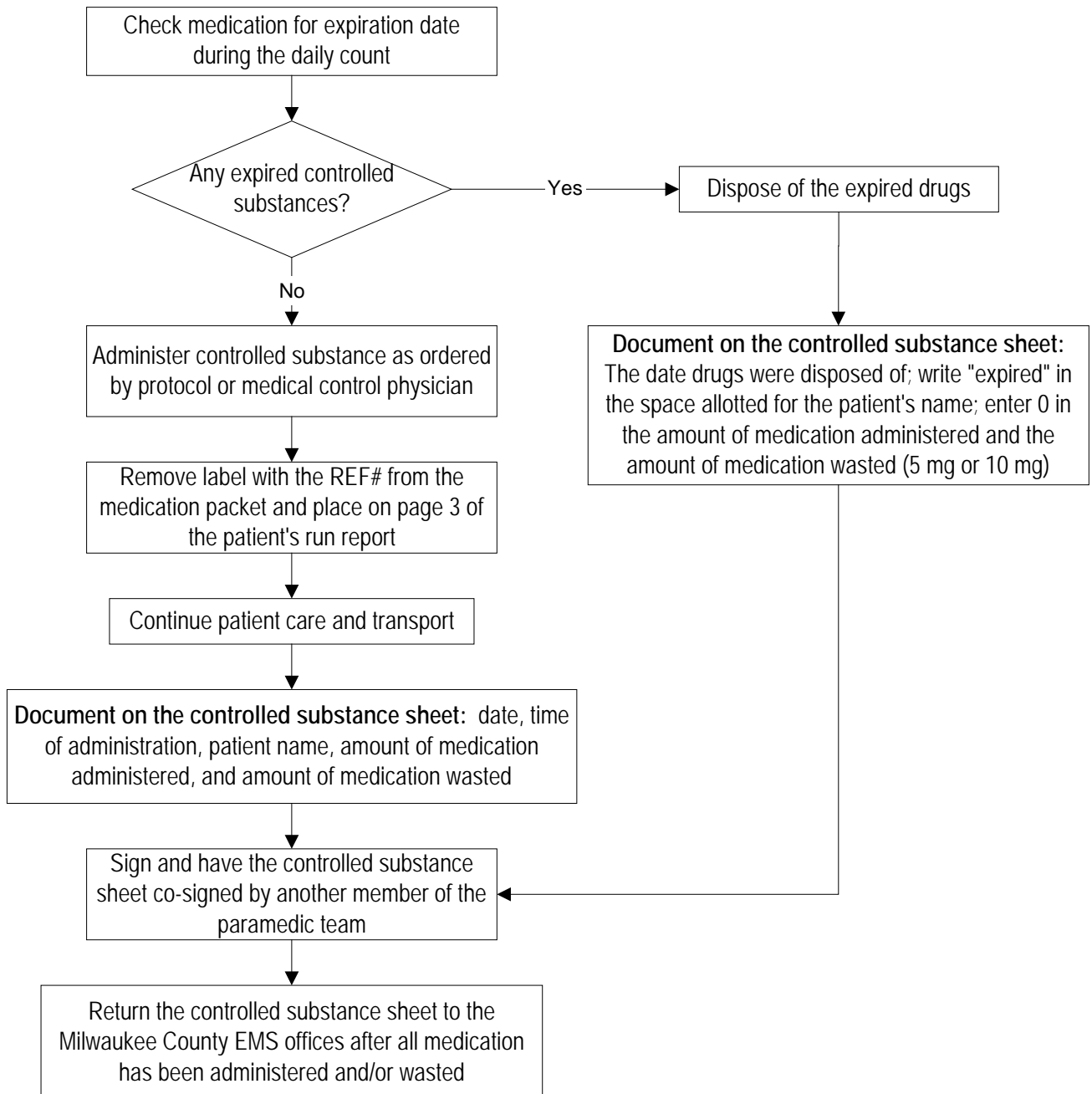


Initiated: 2/27/02
Reviewed/revised: 6/1/05
Revision: 1

**MILWAUKEE COUNTY EMS
OPERATIONAL POLICY
CONTROLLED SUBSTANCE
DOCUMENTATION**

Approved by: Patricia Haslbeck, RN, MSN
Approved by: Ronald Pirrallo, MD, MHSA
Page 1 of 1

POLICY: Administration of controlled substances will be uniformly documented to accurately reflect usage and waste.



NOTES:

- Each MED unit will be audited to assure documentation is complete and accurate.
- Records will also be reconciled with the FMLH pharmacy at the end of the year.